

Luxembourg, Ministère du Développement Durable et des Infrastructures  
23 April 2015

Alessandro Balducci  
Politecnico di Milano

**What European Territory do we want?**

### **Three points**

- ✓ **What the emerging literature says about urbanisation**
- ✓ **The research project on post-metropolitan development we are conducting in Italy as a case-study**
- ✓ **A vision of Europe not only should not be territory blind but also change the view of the urban**

### **POST- METROPOLIS - REGIONAL URBANISATION (SOJA 2011)**

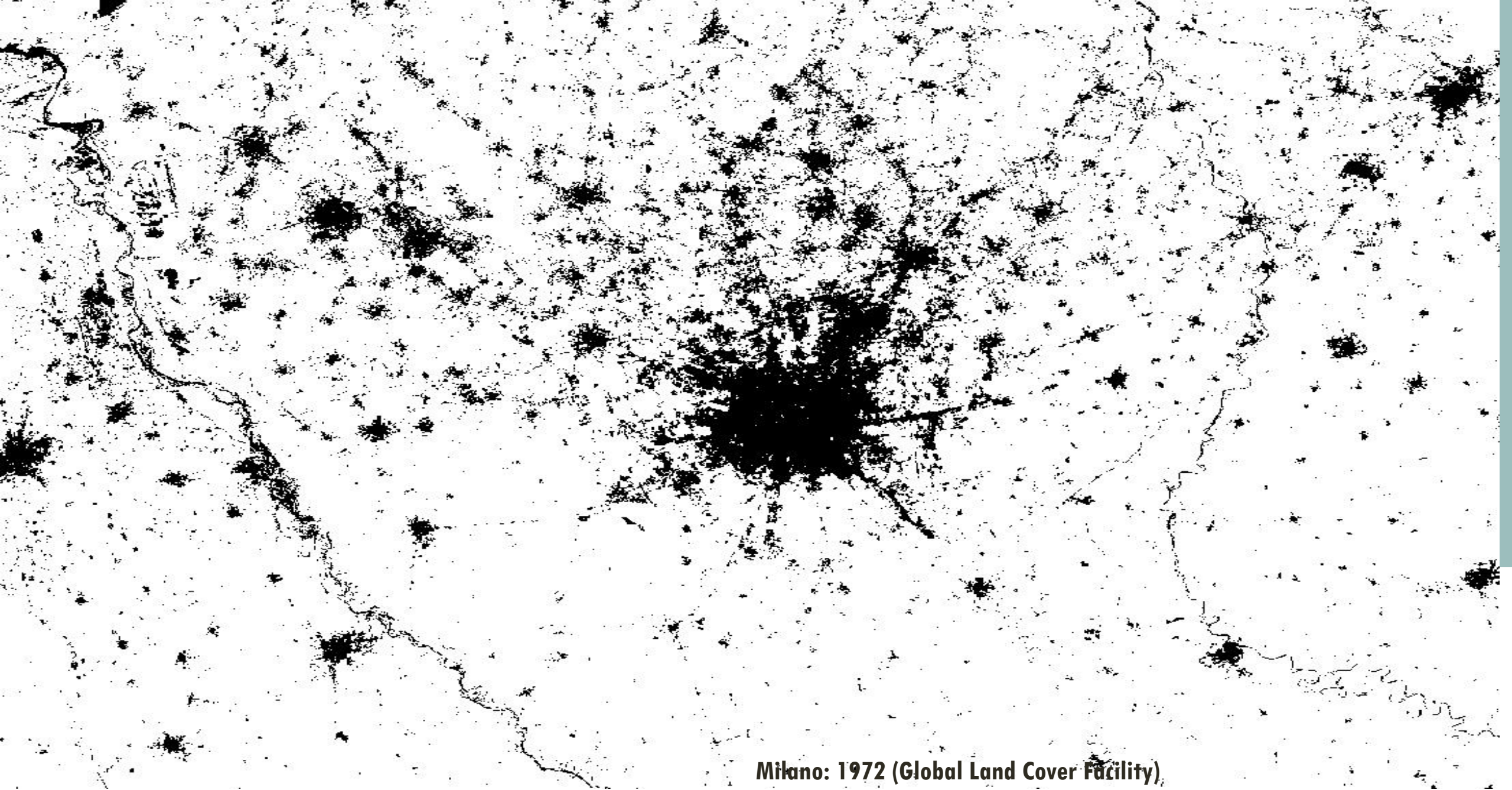
- ✓ the flattening of the gradient of urban density;
- ✓ the progressive erosion of the boundary between urban and suburban;
- ✓ the homogenization of the urban landscape as well as an increasing differentiation and specialization of the suburban.
- ✓ the disappearance of significant differences in lifestyles between urban -suburban, the emergence of different (sub) urban ways of life;
- ✓ the combination of new forms of decentralization and recentralization,
- ✓ the emergence of a new urban form, a polynuclear, densely reticulated and intensive information
- ✓ The emergence of a new urban question: spatial justice, environmental question. . .

### **PLANETARY URBANISATION (BRENNER 2013-14)**

- ✓ a process of capitalist urbanisation is taking place, that involves the so-called realm of non-urban, that obliges to reframe both theory and practices of the urban
- ✓ Implosion- explosion: “society is completely urbanised”
- ✓ If the urban is everywhere, the question of citizenship cannot be linked to a traditional model of the city, place based and local

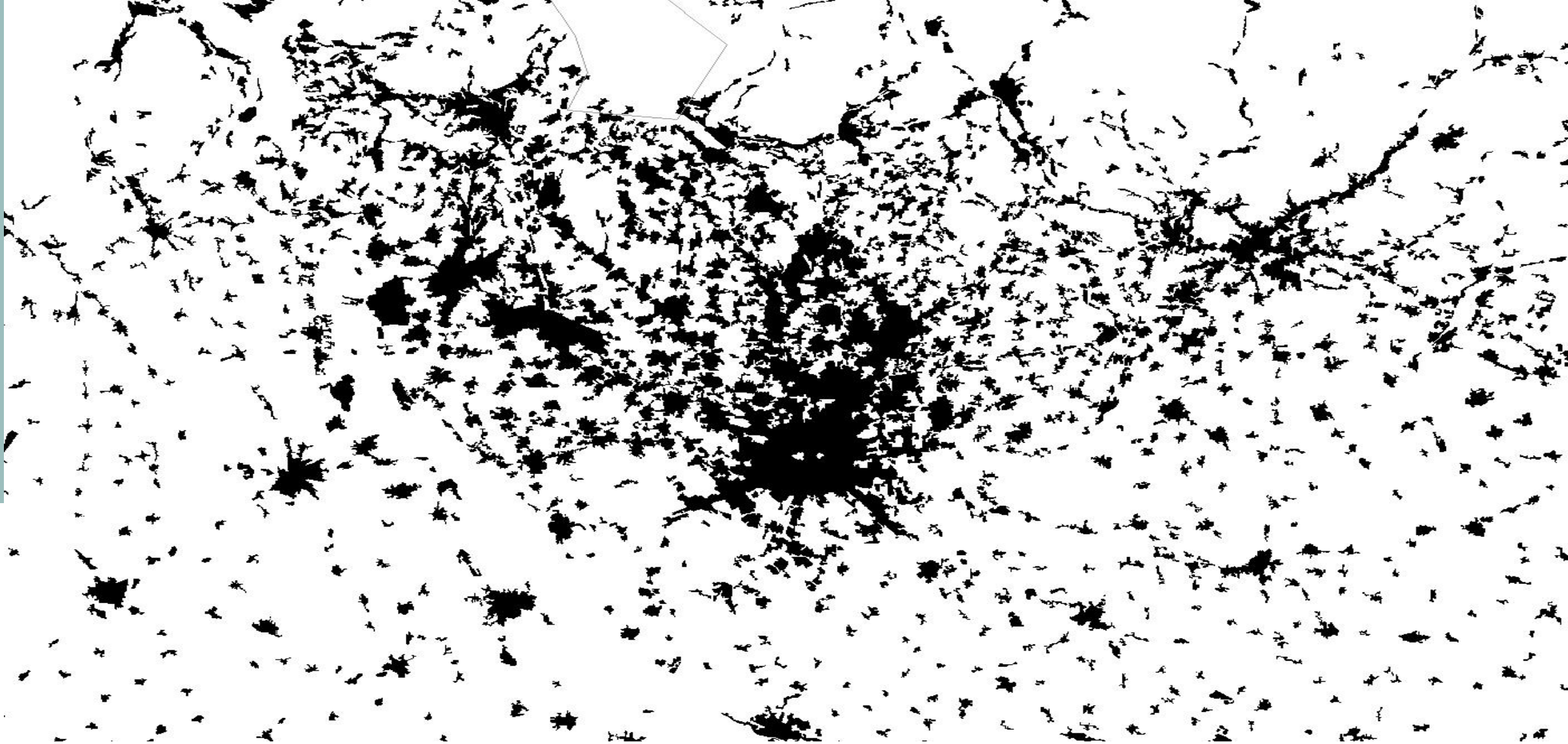
### **SUBURBANISATION (KEIL ET AL., 2011)**

- ✓ Suburban as a neglected space/ suburban as the emerging form of contemporary urban
- ✓ Suburbanisation as the outcome of new interactions between novel rationalities: strategies of growth, practices of collective consumption, residential expansion, preservation of environment and landscape.
- ✓ suburban, is therefore, per se, not just the field of rescaling of traditional social and environmental question, but the heart of new political tension, if not the space for excellence of the accumulation of tension

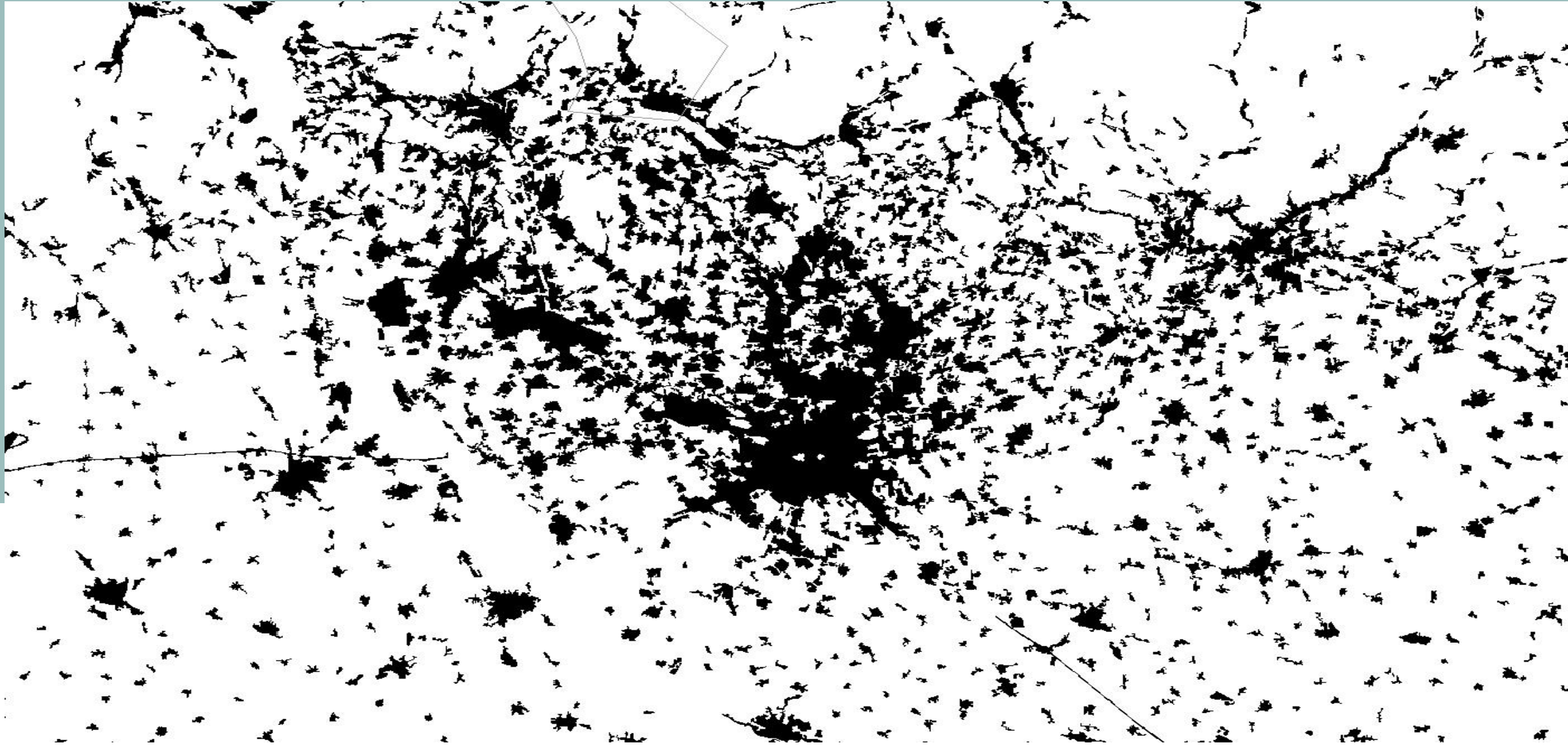


**Milano: 1972 (Global Land Cover Facility)**

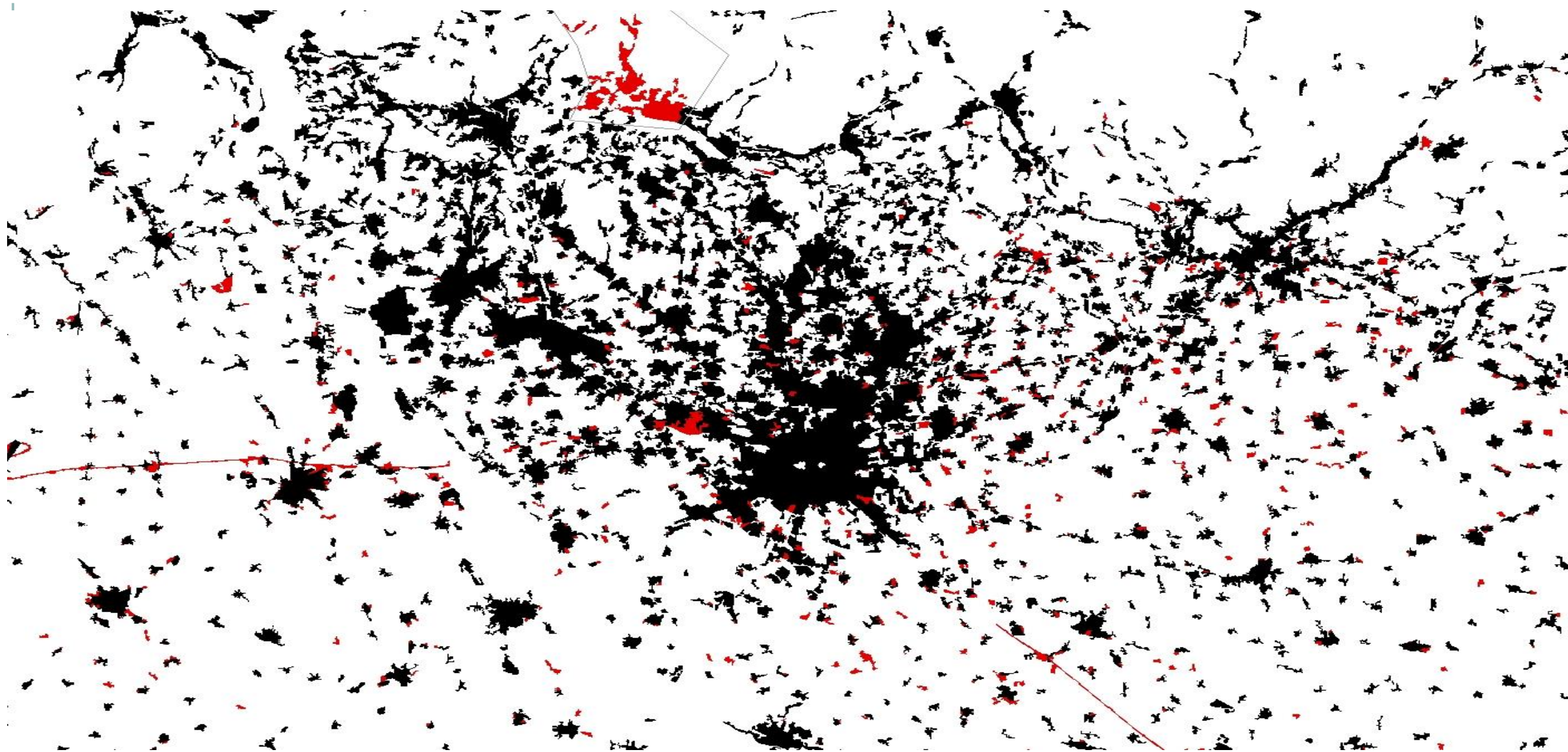
# Milan: CLC artificial surfaces, 1990



# Milan: CLC artificial surfaces, 2006

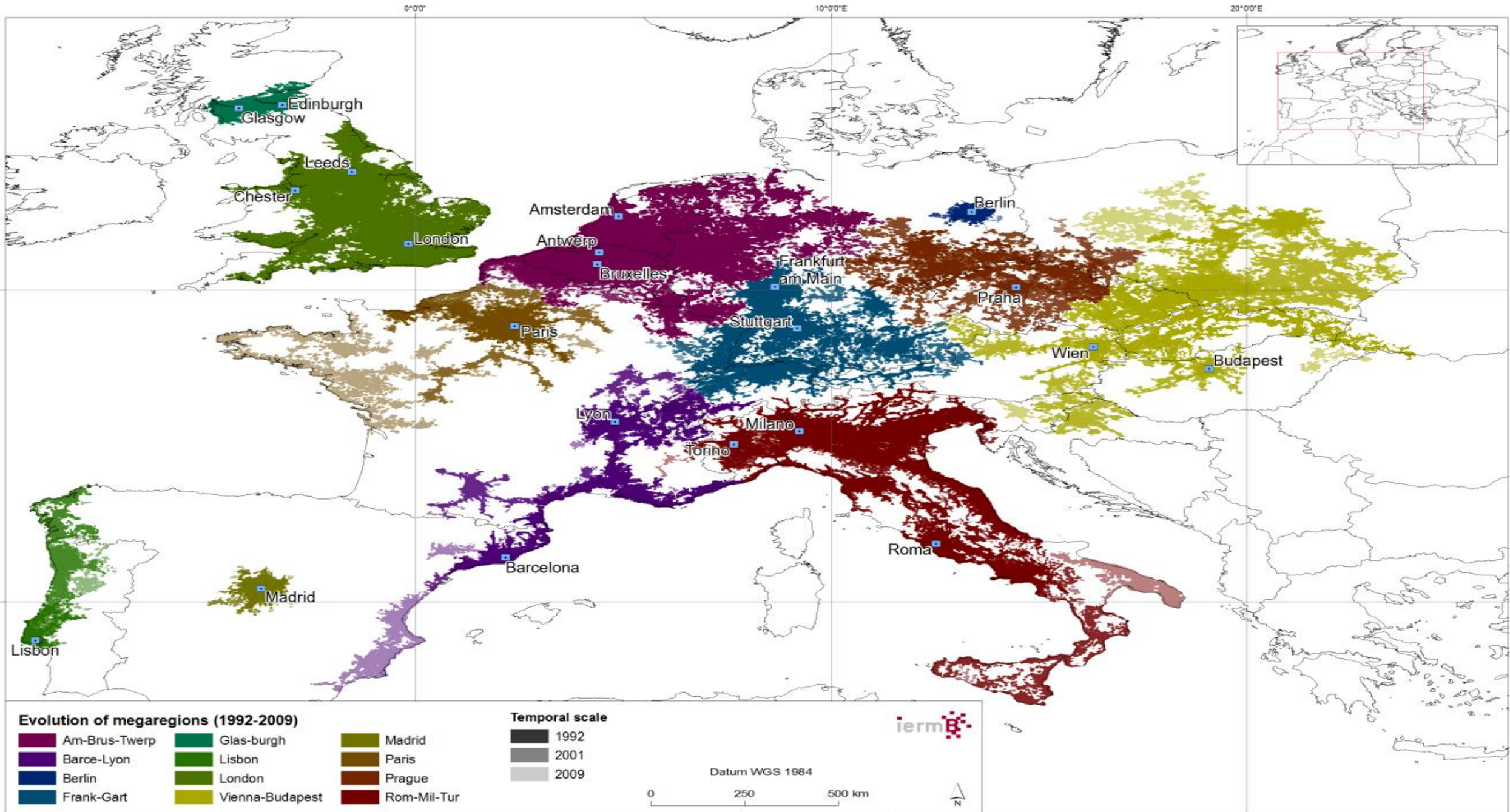


# Milan: CLC artificial surfaces, 1990 - 2006





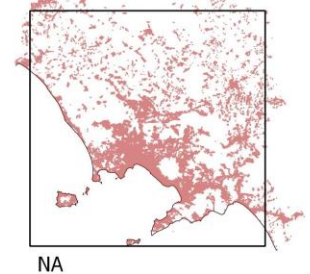
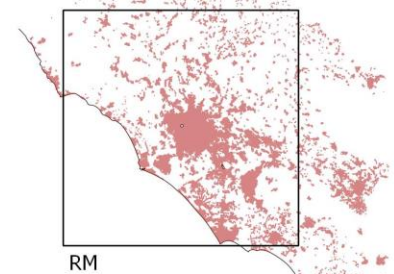
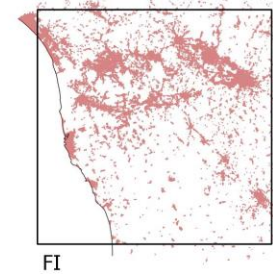
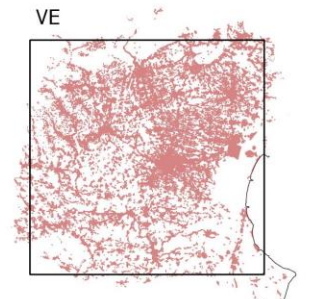
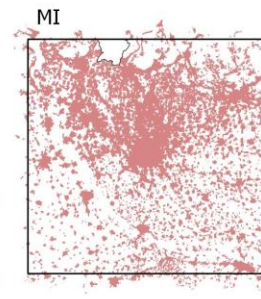
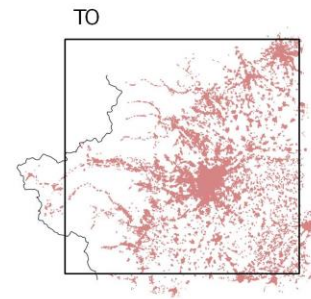
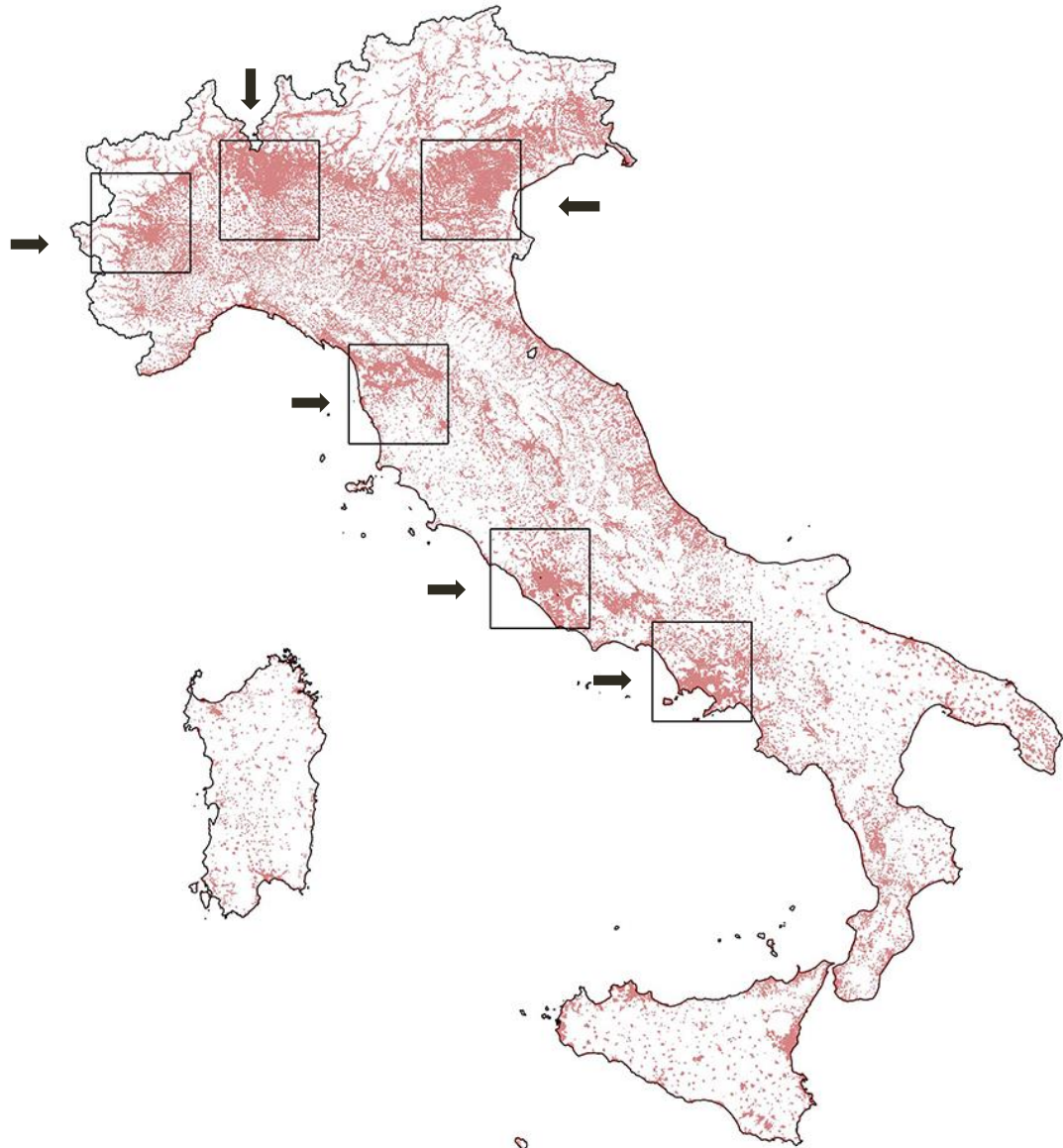




## THE *MEGA-CITY-REGION*

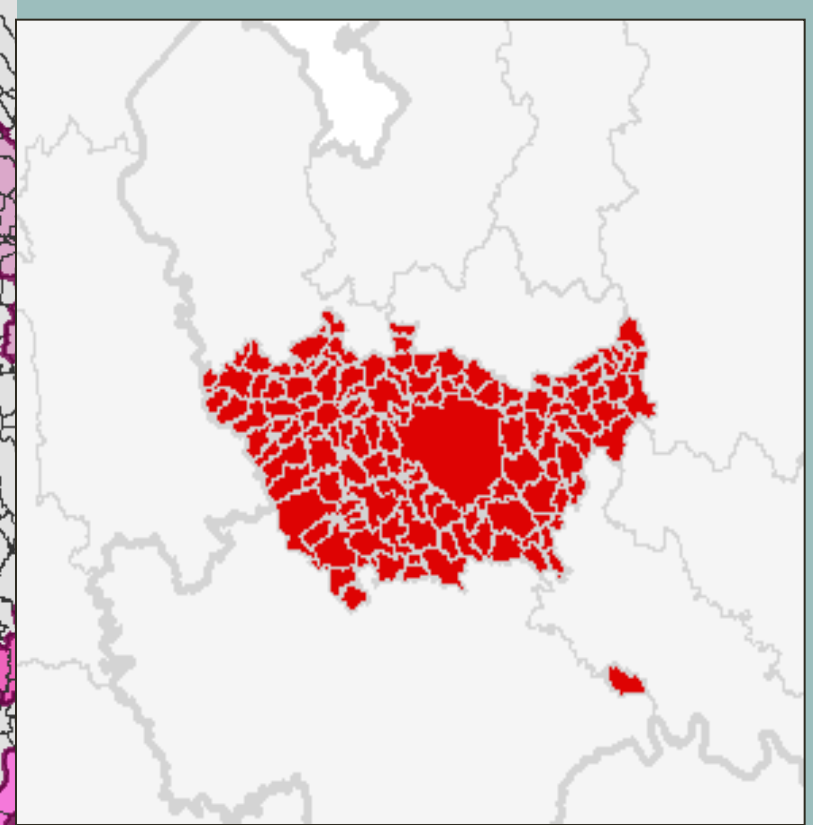
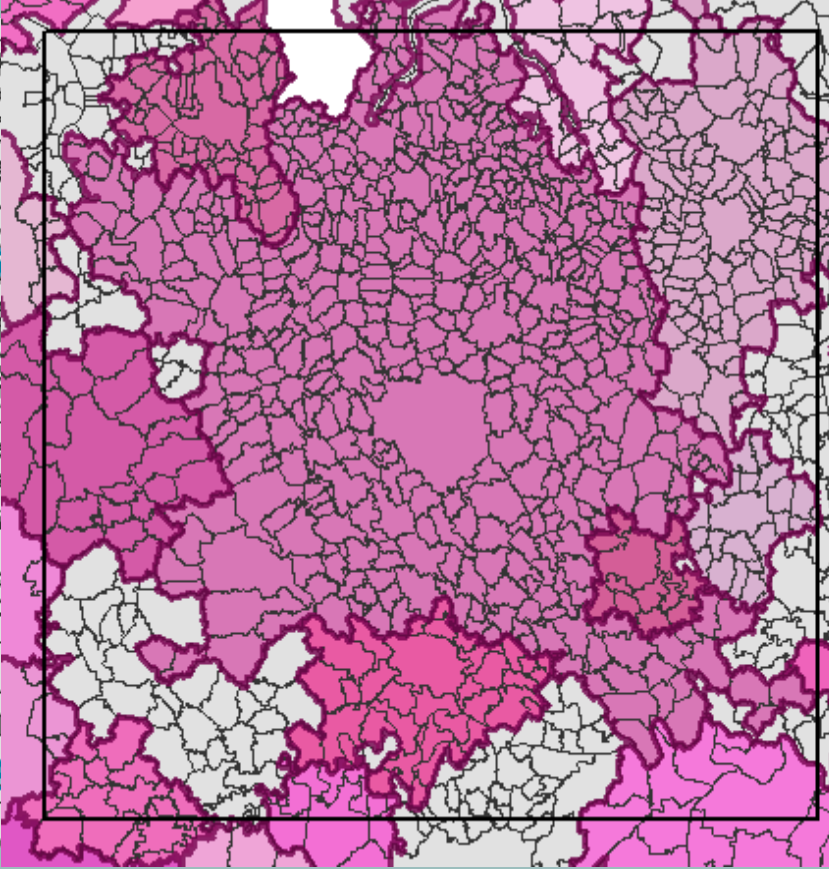
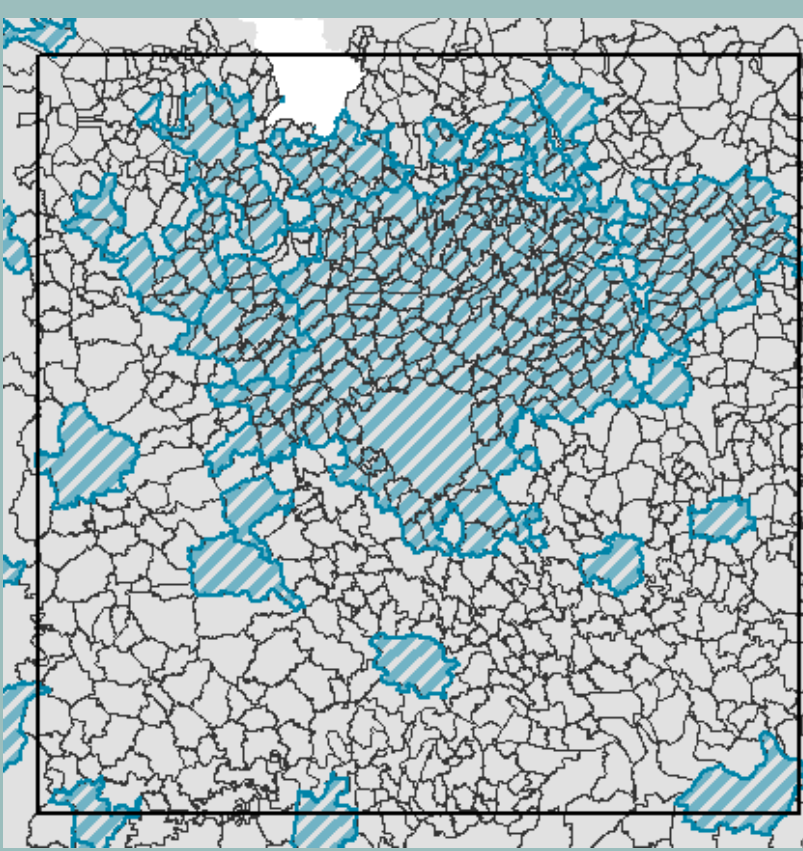
“.. A series of anything **between 10 and 50 cities and towns**, physically separate but functionally networked, **clustered around one or more larger central cities**, and drawing enormous economic strength from a new functional division of labor. These places exist both as **separate entities**, in which most residents work locally and most workers are local residents, and as a **parts of a wider functional urban region** connected by flows of people and information carried along motorways, high-speed rail lines and telecommunications cables..”

(Hall, Pain 2006)



**100X100 KMQ «SQUARES»**

**6 main cases + 3**  
**An Atlas with 500 indicators**  
**from different sources**



MORPHOLOGICAL URBAN AREAS

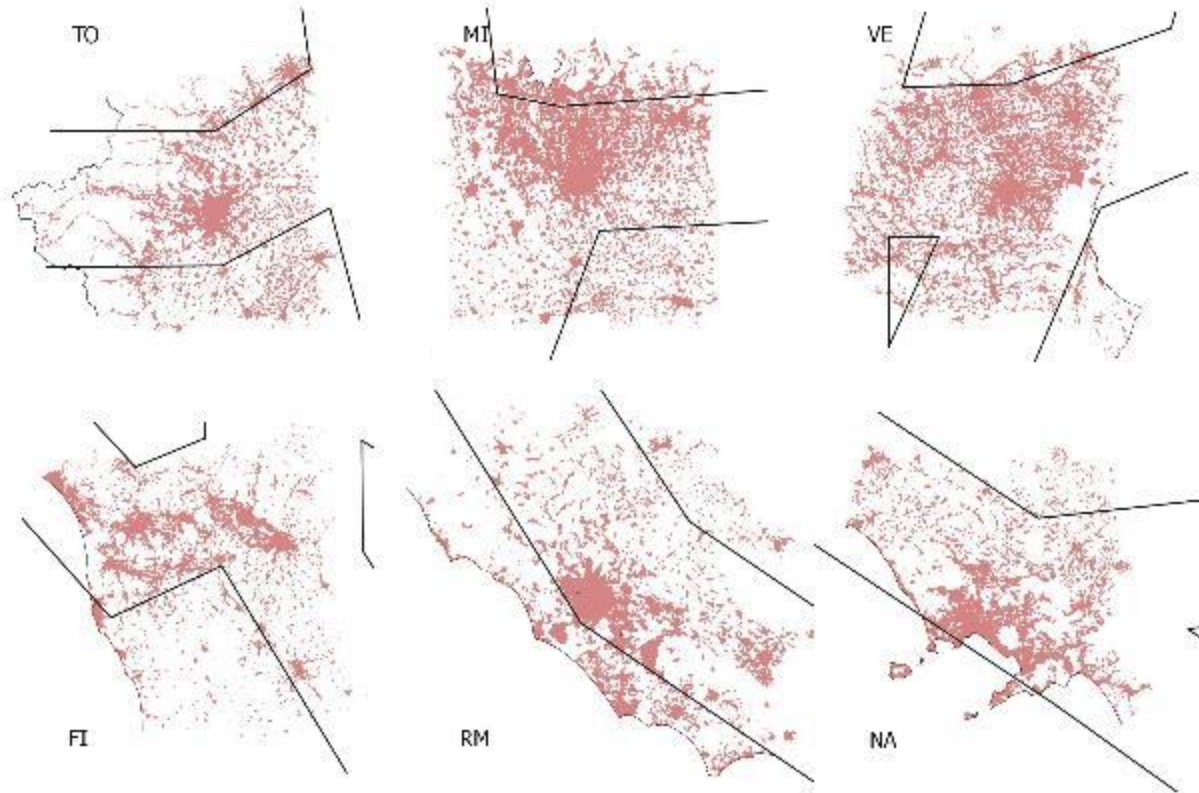
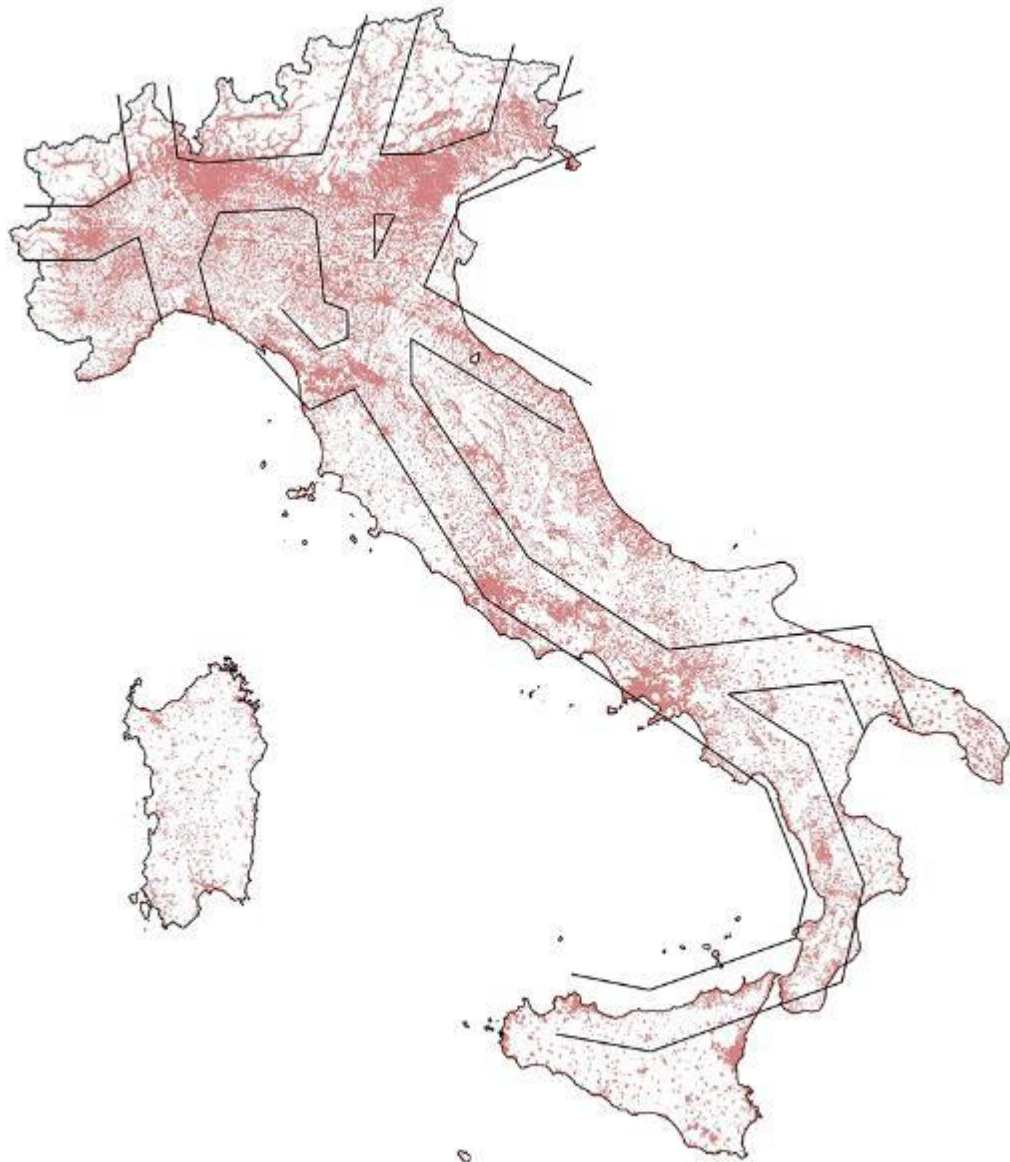
FUNCTIONAL URBAN AREAS

METROPOLITAN CITY BOUNDARIES

### SOURCES

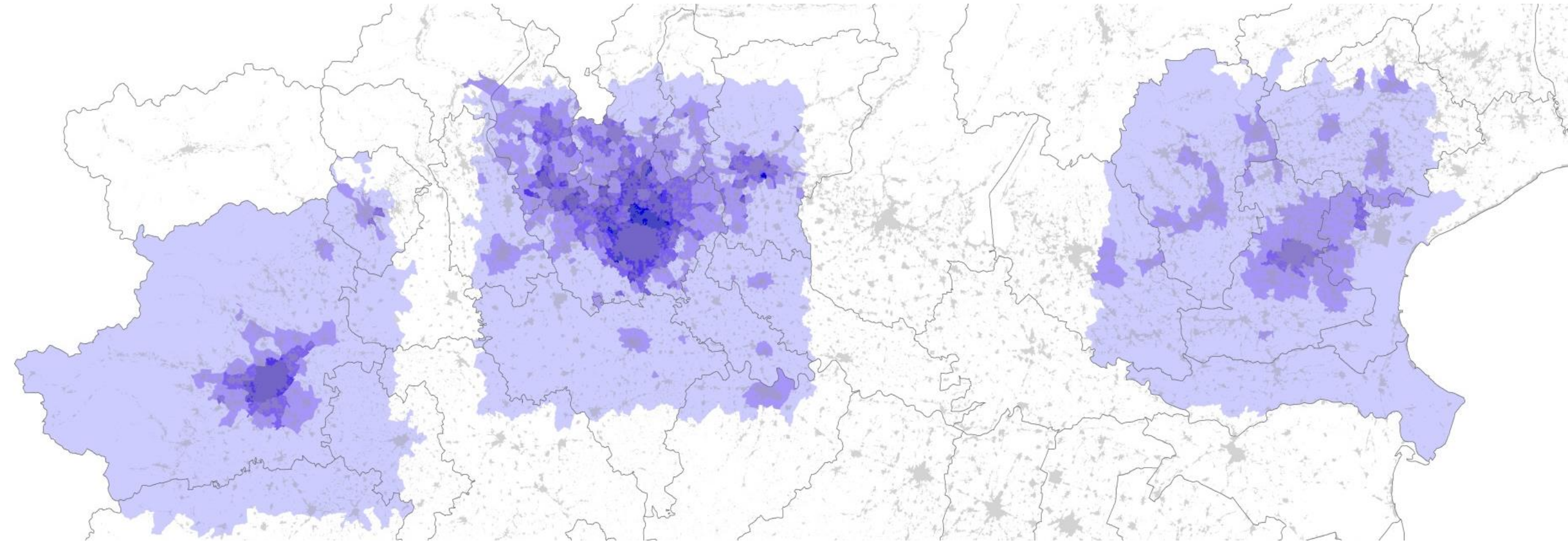
Istat + Database ESPON <http://database.espon.eu/db2/>

Administrative geography fails to cope with processes of regional urbanisation

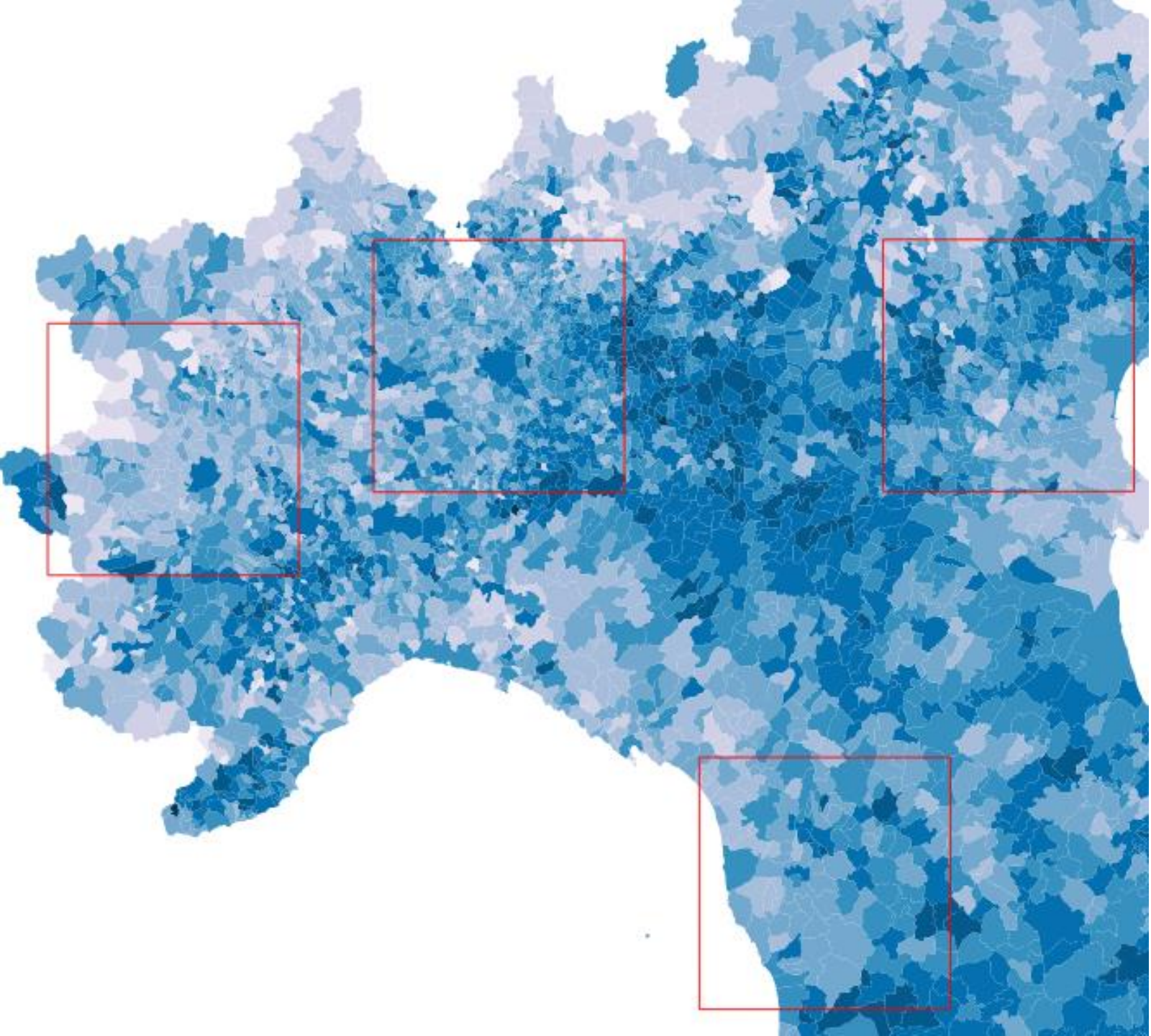


## CORRIDORS





**LAND CONSUMPTION**

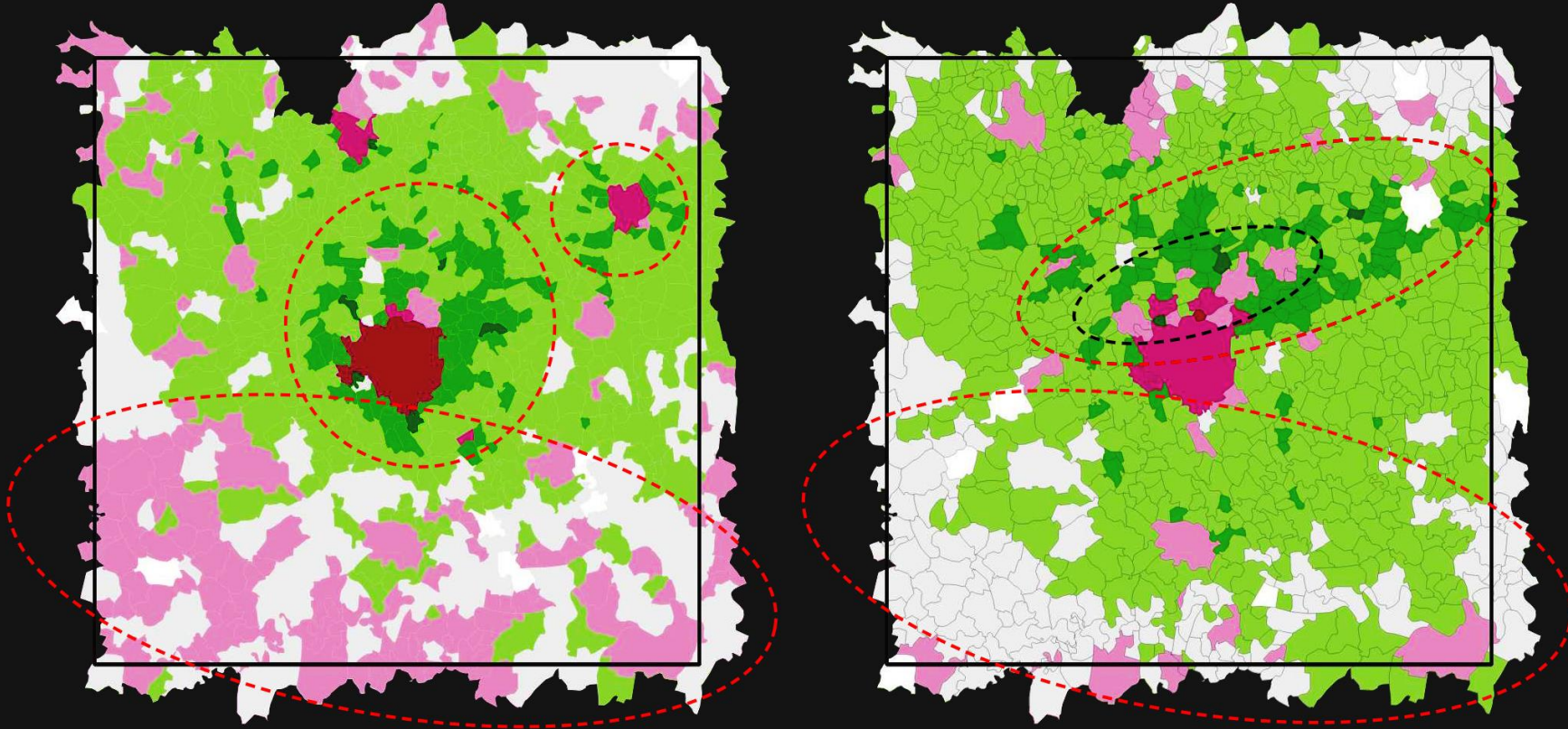


**% OF IMMIGRANTS**

A. ABSOLUTE CHANGE IN  
POPULATION DENSITY 1971-1991\*

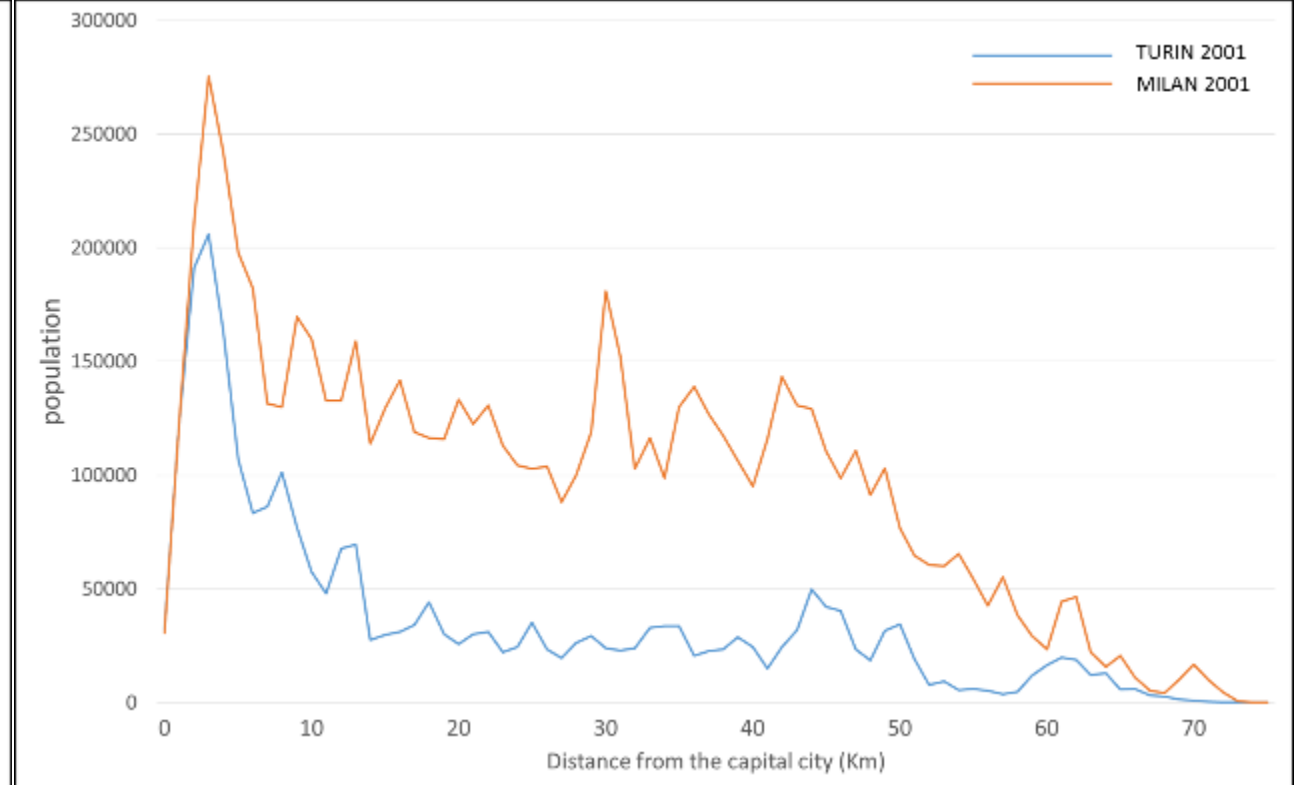
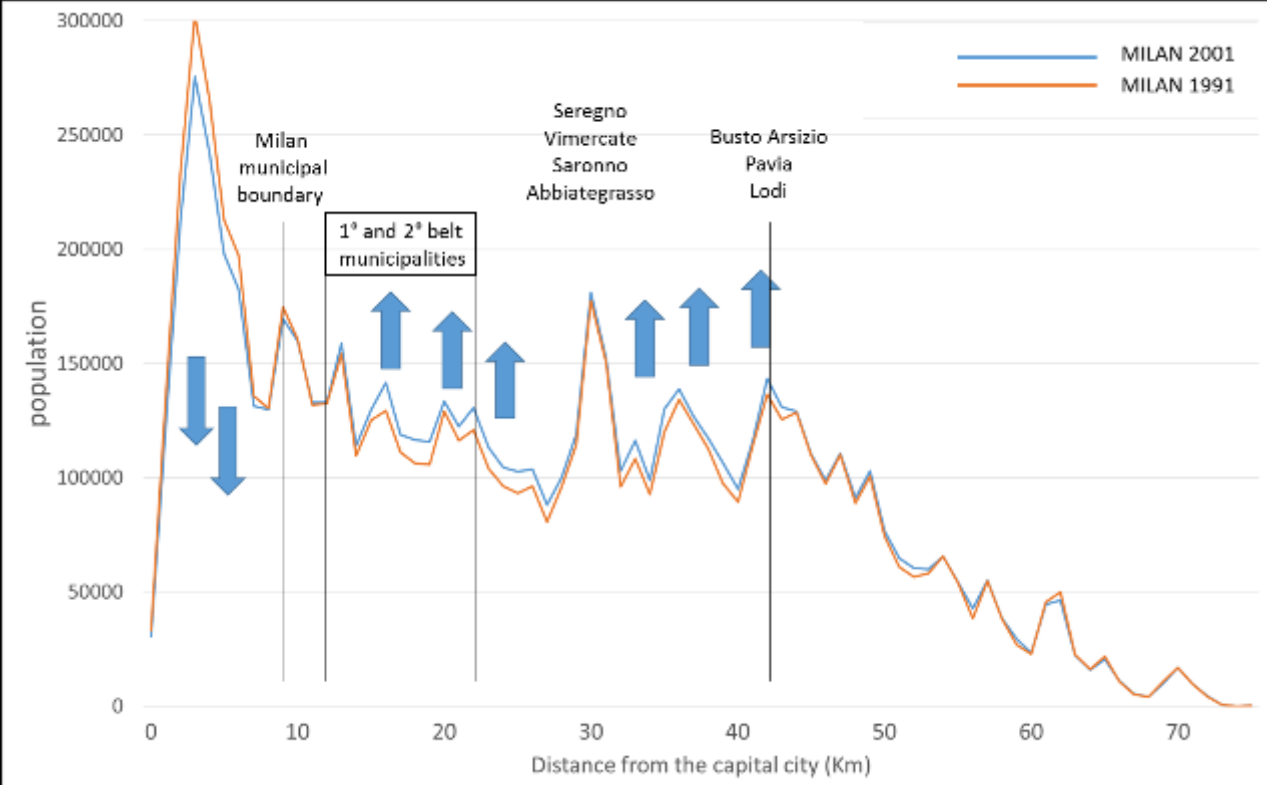
B. ABSOLUTE CHANGE IN  
POPULATION DENSITY 1991-2011\*

(\*\*)  
■ population density decrease  
■ population density increase

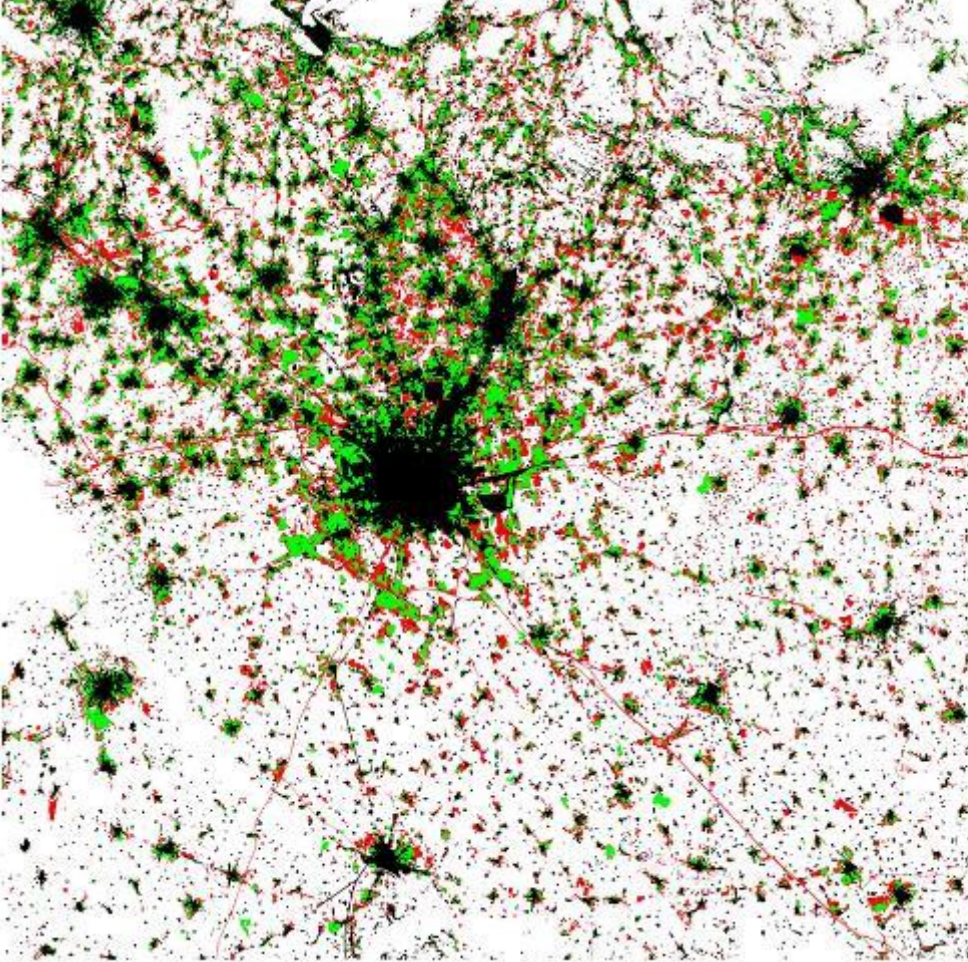


DENSIFICATION



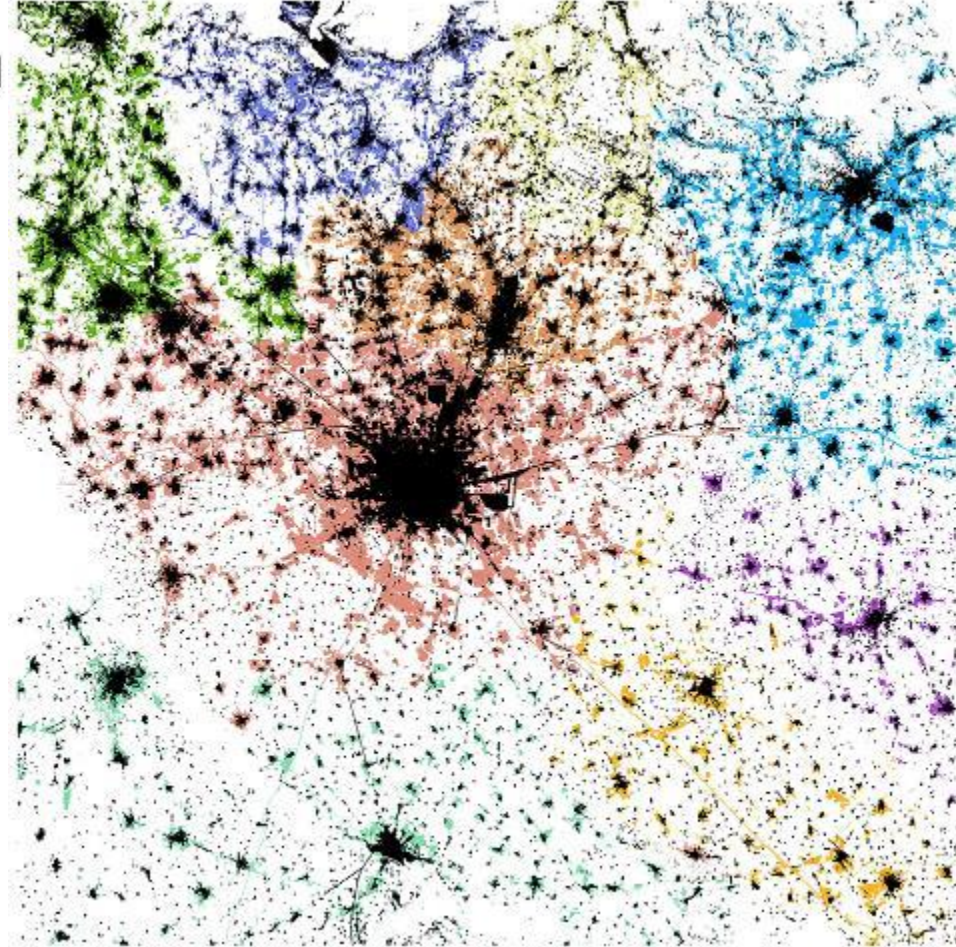


**DENSITY**



### URBAN GROWTH

- 1955
- 1980
- 2012



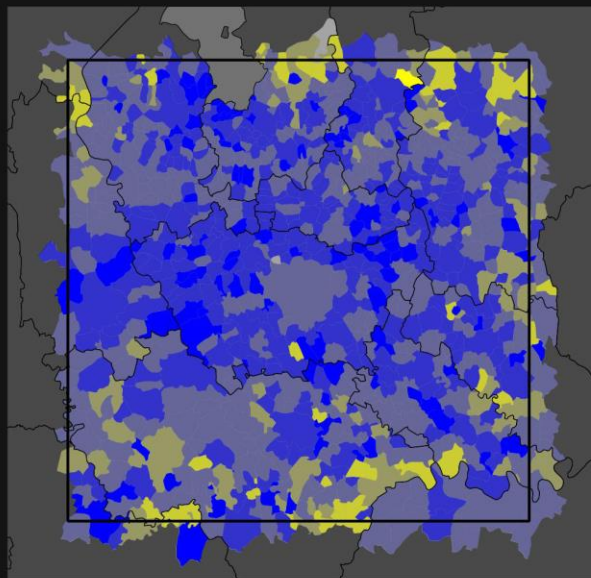
### URBAN GROWTH 1955

POLYCENTRIC PATTERN  
FILTERED BY PROVINCIAL  
BOUNDARIES

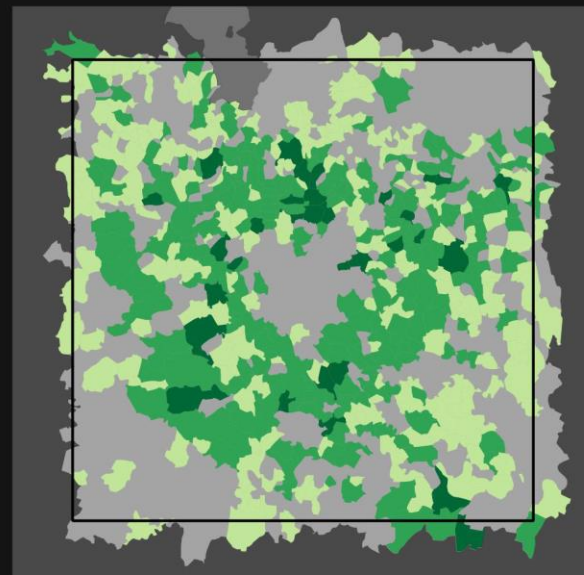
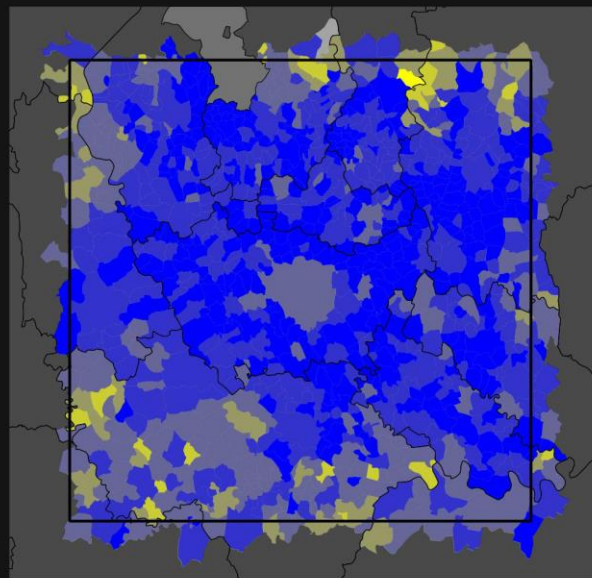
- 1955

✓ A NEW TERRITORIAL PATTERN

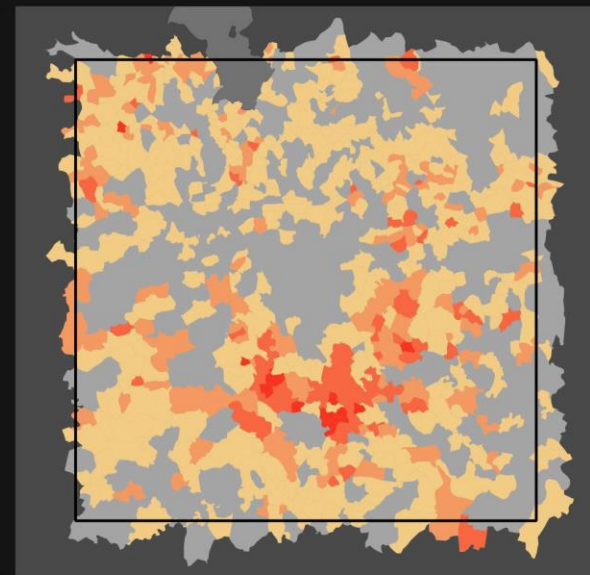
A. MOBILITY INDEX 2001  
DENSITY OF DISPLACEMENTS FOR WORK



B. MOBILITY INDEX 2011  
DENSITY OF DISPLACEMENTS FOR WORK



C. DECREASE OF SELF-CONTAINMENT  
(2001-2011)

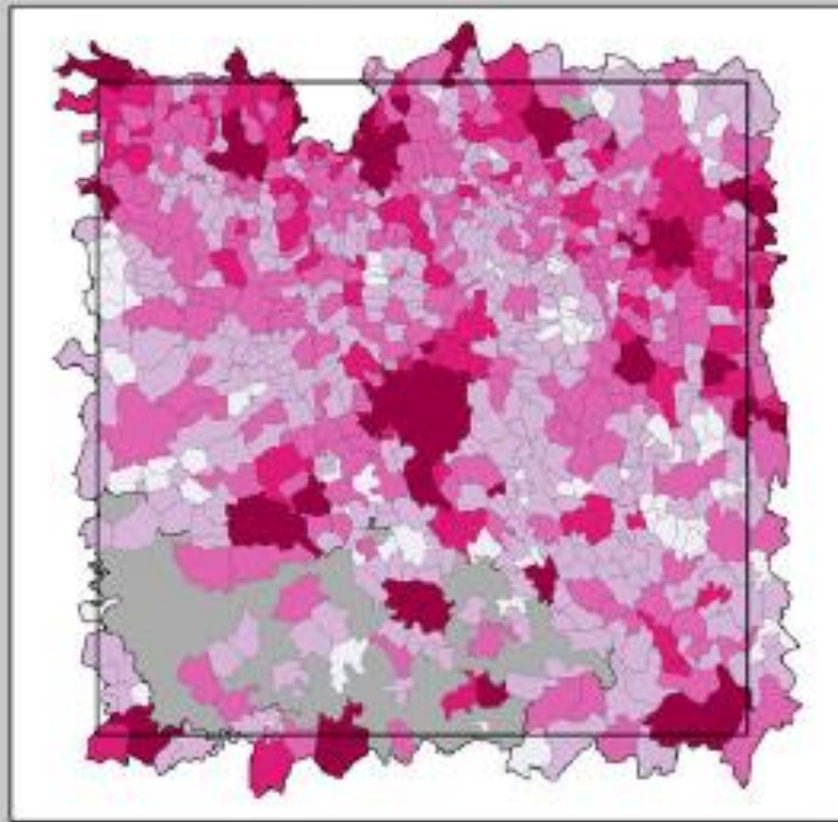


D. INCREASE OF DEPENDENCE INDEX  
(2001-2011)

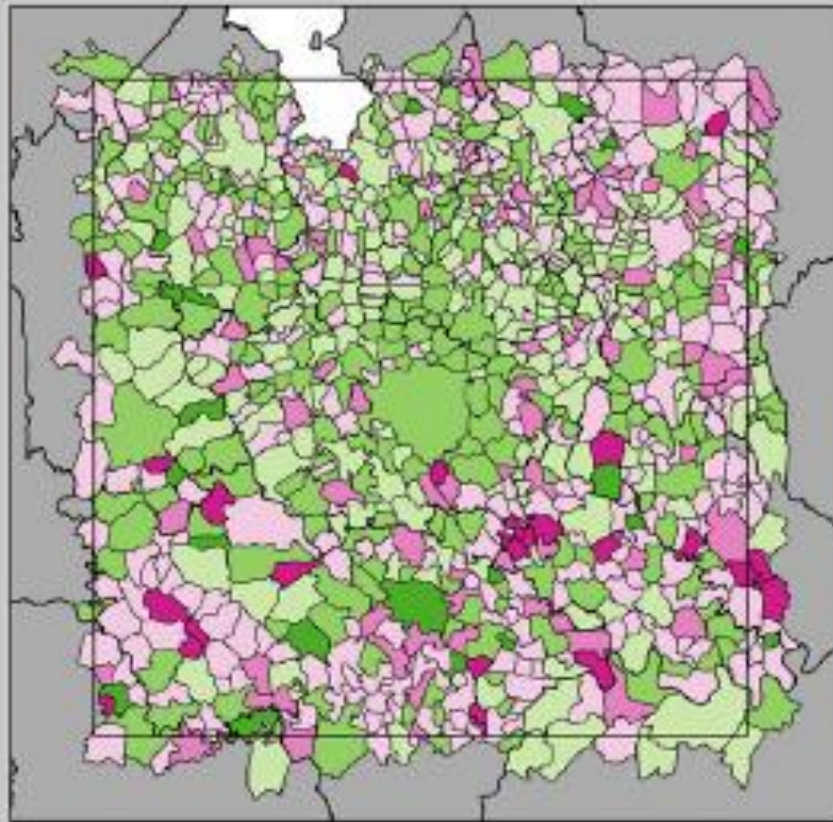
## MOBILITY

### SOURCES

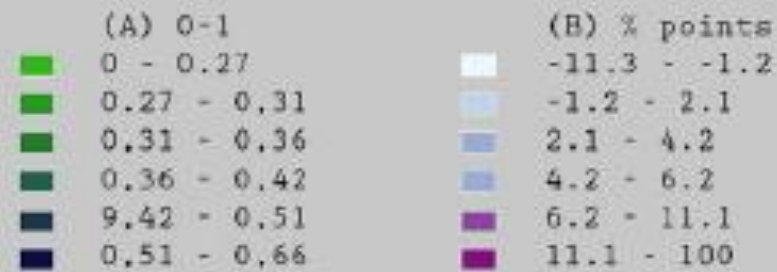
Istat + Database ESPON <http://database.espon.eu/db2/>



C. HOUSING RISK INDEX 2012



D. CHANGE IN HOUSING DEPRIVATION INDEX BETWEEN 2001 AND 2011



SOCIAL ISSUES

# Governance

## Reti di cooperazione a progetto

### Comuni (classificazione DISP)

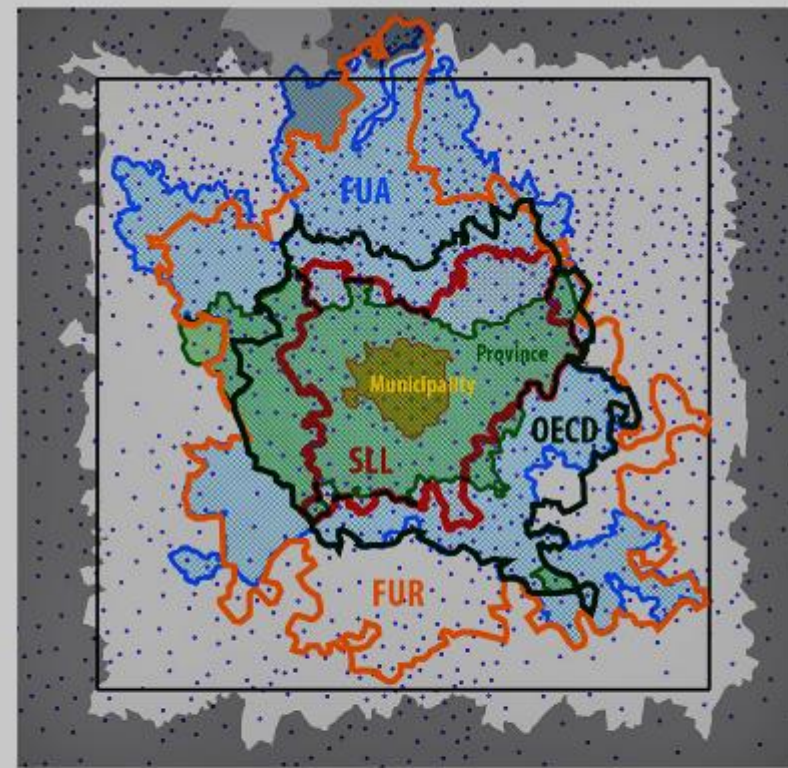
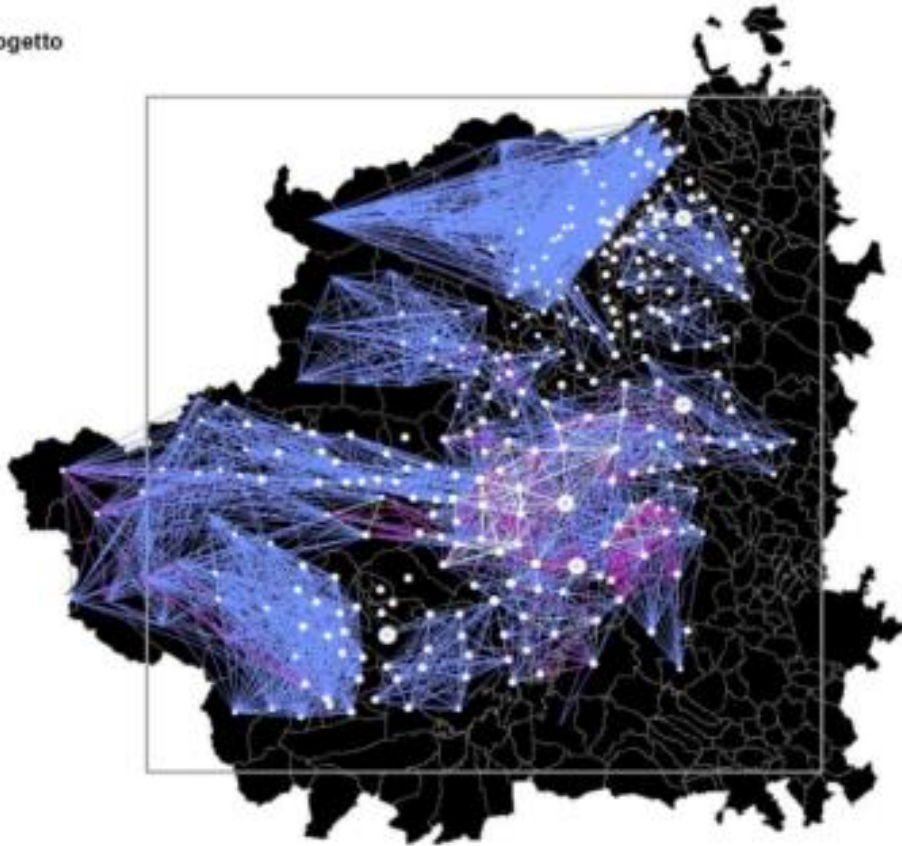
- poli
- poli intermedi
- città
- intermedi
- periferici

### Reti di cooperazione

(bianche) di tipo forte

— di tipo medio

— di tipo debole



D. DEFINITIONS AND PERIMETERS  
OF THE URBAN/METROPOLITAN AREA  
(DOTS = MUNICIPALITIES CENTROIDS)

**NEW GOVERNANCE  
ARRANGEMENTS**

## POLICY IMPLICATIONS

- ✓ The territory “in between” is not in between any more
- ✓ The former suburban space is the space where change is happening but there is not attention and focus on it
- ✓ There are interesting processes of transformation which should be sustained in the extended urban space:
  - ✓ Decentralised production of energy
  - ✓ Re-naturalisation of impermeable spaces
  - ✓ Development of new forms of sustainable mobility
  - ✓ Development of alternative housing models
  - ✓ Development of a new decentralised economy from new manufacturing to shared office space
  - ✓ New relations between producers and consumers
  - ✓ New role of agriculture
  - ✓ New opportunities for closing cycles
- ✓ Governance cannot attempt to include in a new perimeter the urban region which is expanding constantly and work only on cooperation and networking
  
- ✓ **A European spatial vision should change the concept of city adopted and look at regional urbanisation as the most important territorial phenomenon**